

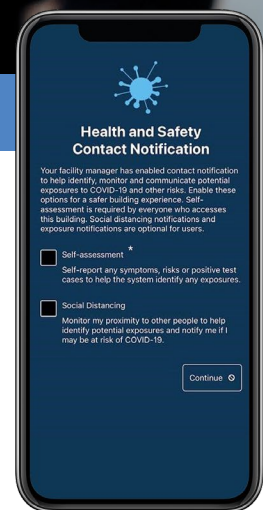


Monitor and manage exposure risks in the workplace.

BlueDiamond Contact Notification Service

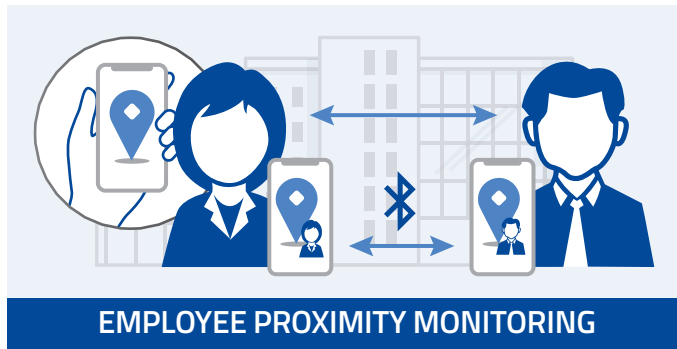
The global pandemic has changed expectations for health and safety in the workplace. Contact Notification is a new subscription-based service, deployed through the BlueDiamond™ mobile app, that provides employees with the ability to self-assess their COVID-19 status, receive real-time social distancing reminders, as well as anonymized notifications if they have recently come into contact with a self-assessed COVID-19-positive user within their workplace.

This service also empowers building administrators with the data and tools they need to monitor and manage exposure risks within the workplace. To help ensure a safer return to work, building administrators can set social distancing parameters and can configure the app to restrict use of mobile credentials, for a specified quarantine period, for employees who self-assess positive. BlueDiamond readers and mobile credentials form an advanced solution in **Carrier's Healthy Buildings Program**, designed to help protect people and assets, and to help optimize building health and efficiency.



HEALTHYBUILDINGS

Contact Notification Features



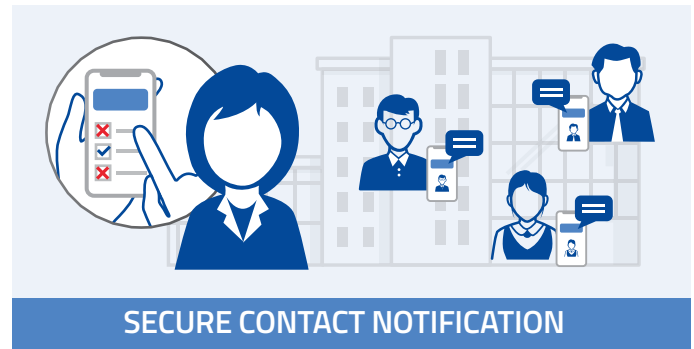
BlueDiamond mobile app monitors proximity of employees while in a building.

Monitor employee proximity with geofence technology

Information is anonymized

Mobile-to-mobile proximity sensing

Battery life and cellular data friendly



Real-time capture of employee proximity events

Proximity sensing and notification

Captures and stores contact events anonymously

Contact proximity and duration of events are tagged

Adheres to data privacy requirements

For Building Administrators

The Contact Notification Administration Console provides building administrators with real-time access to the data and tools they need to monitor and manage exposure risks in the workplace. Through the console, building administrators can configure app settings, monitor health trends, generate reports detailing the number of potentially at-risk employees and more. Minimum social distancing parameters can also be configured for both proximity and duration. All employee information housed in the console is anonymous.

For Employees

With Contact Notification, employees complete daily self-assessments to report any symptoms, risks or positive COVID-19 status. This service utilizes mobile-to-mobile Bluetooth® technology to help enforce social distancing in the workplace and provides real-time app notifications to employees who violate the distancing guidelines. Additionally, employees will receive anonymized notifications if they have recently come into contact with a self-assessed COVID-19-positive user within the facility. All information collected and stored as part of the Contact Notification service is anonymized.

Exposure Notifications and your Privacy



You have full control to receive exposure notifications and can turn it off at any time.



The app will never track your location. It uses Bluetooth to detect if two mobile devices are near each other.



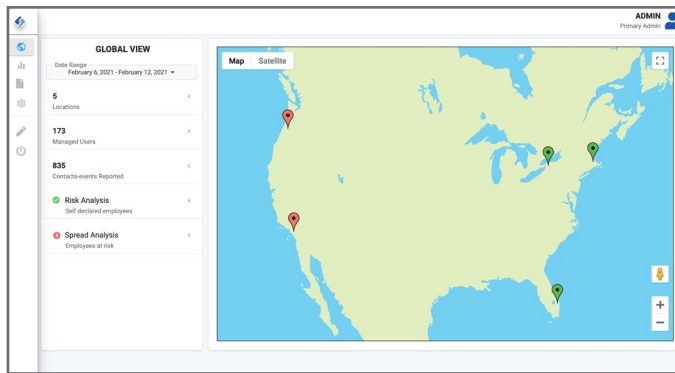
Use of the app does not reveal your identity.



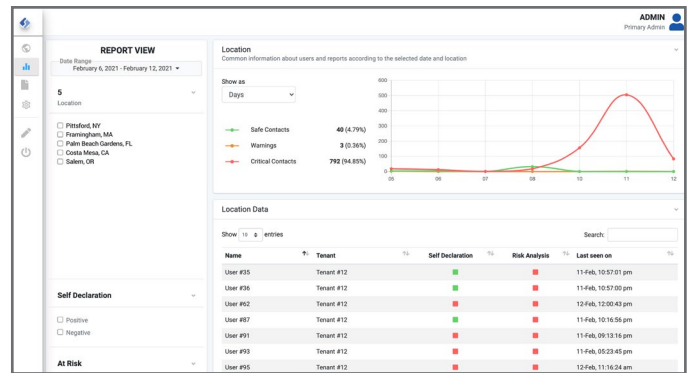
Information collected, transmitted, or stored by the app is anonymized.

Administration Console

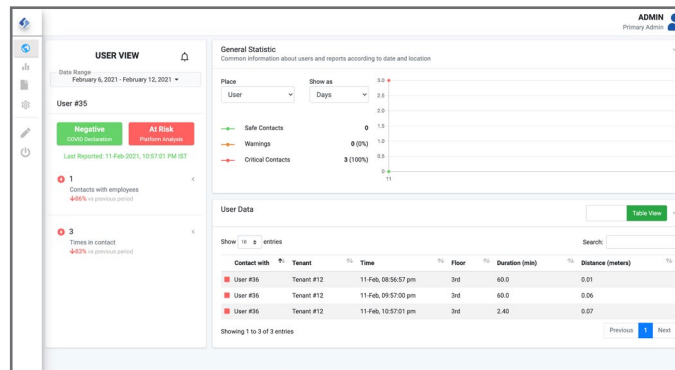
As part of the on-boarding process, building administrators will gain access to the Contact Notification Administration Console.



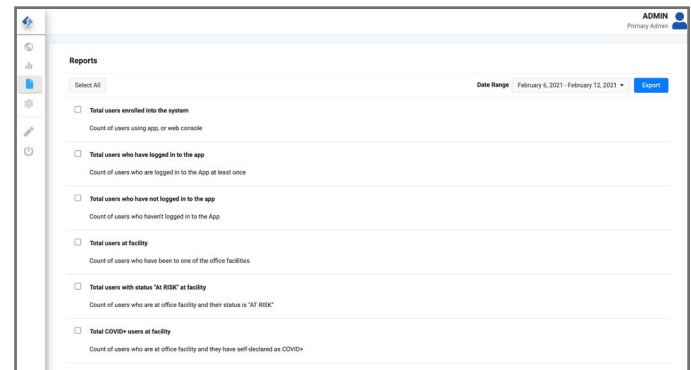
For end users with multiple business locations, the Administration Console will aggregate data across all locations to provide a global view. Further drill-down options are available for location-specific information.



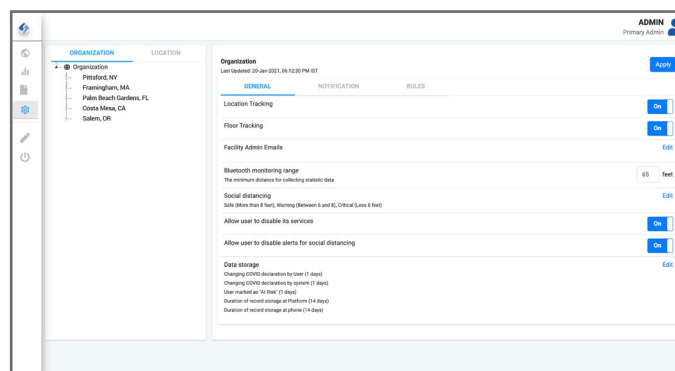
The Report View allows building administrators to see a summary of employee* self-declarations and the associated risk analysis based on proximity events. *Note that employees are listed by a unique, randomly-generated identifier.



The User View allows building administrators to see proximity event details such as date, time and duration. Information is anonymized and is not personally identifiable.



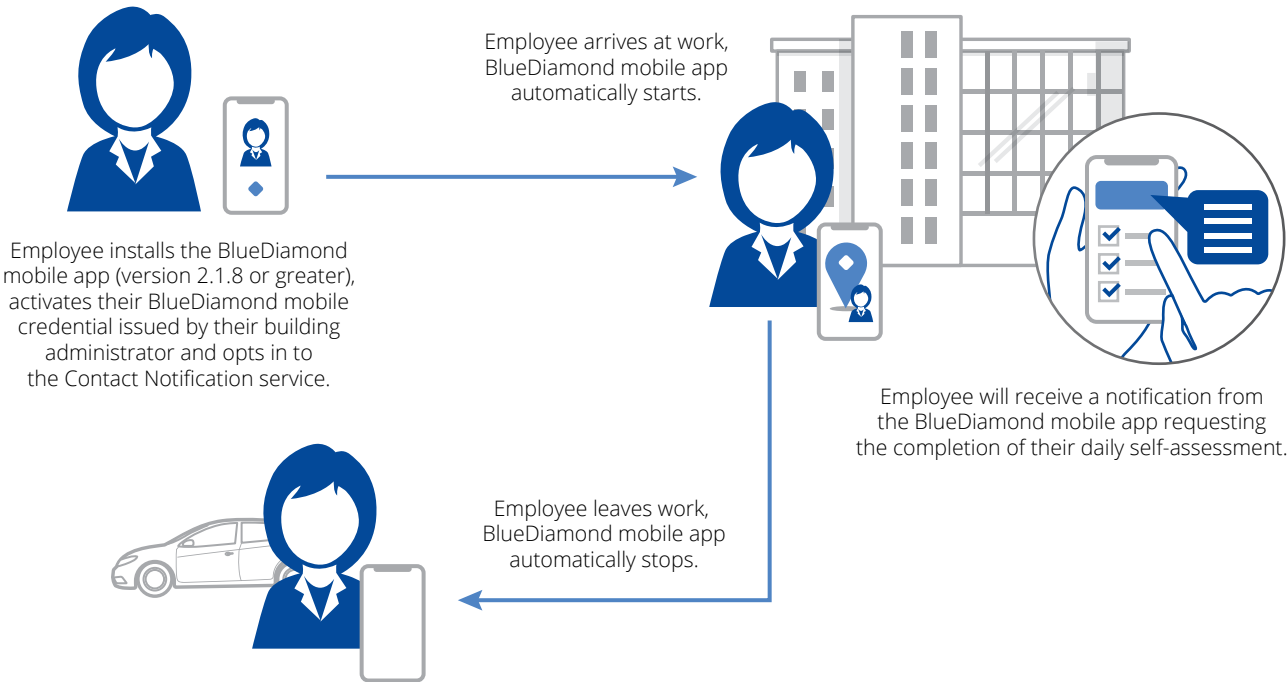
A variety of reports can be generated from the Administration Console such as **Enrolled Users**, **Users at Facility**, **Users with "At Risk" Status** and more. Reports can be customized by date range and exported from the system.



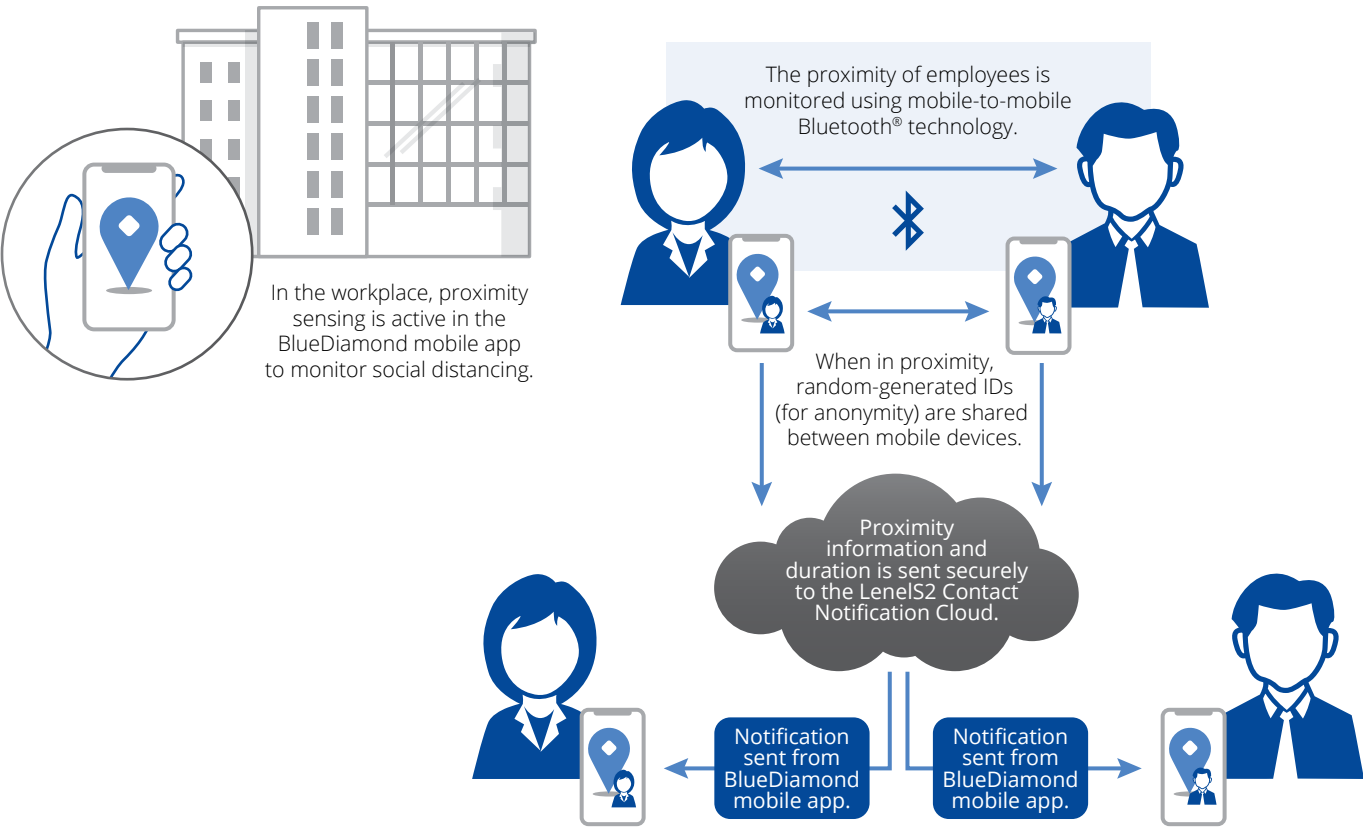
Under the Settings View, building administrators can customize notification settings for employees who have opted in to the BlueDiamond Contact Notification service, establish or modify social distancing rules as well as set-up internal notifications and locations.

Solution Overview

Geofence-based Technology

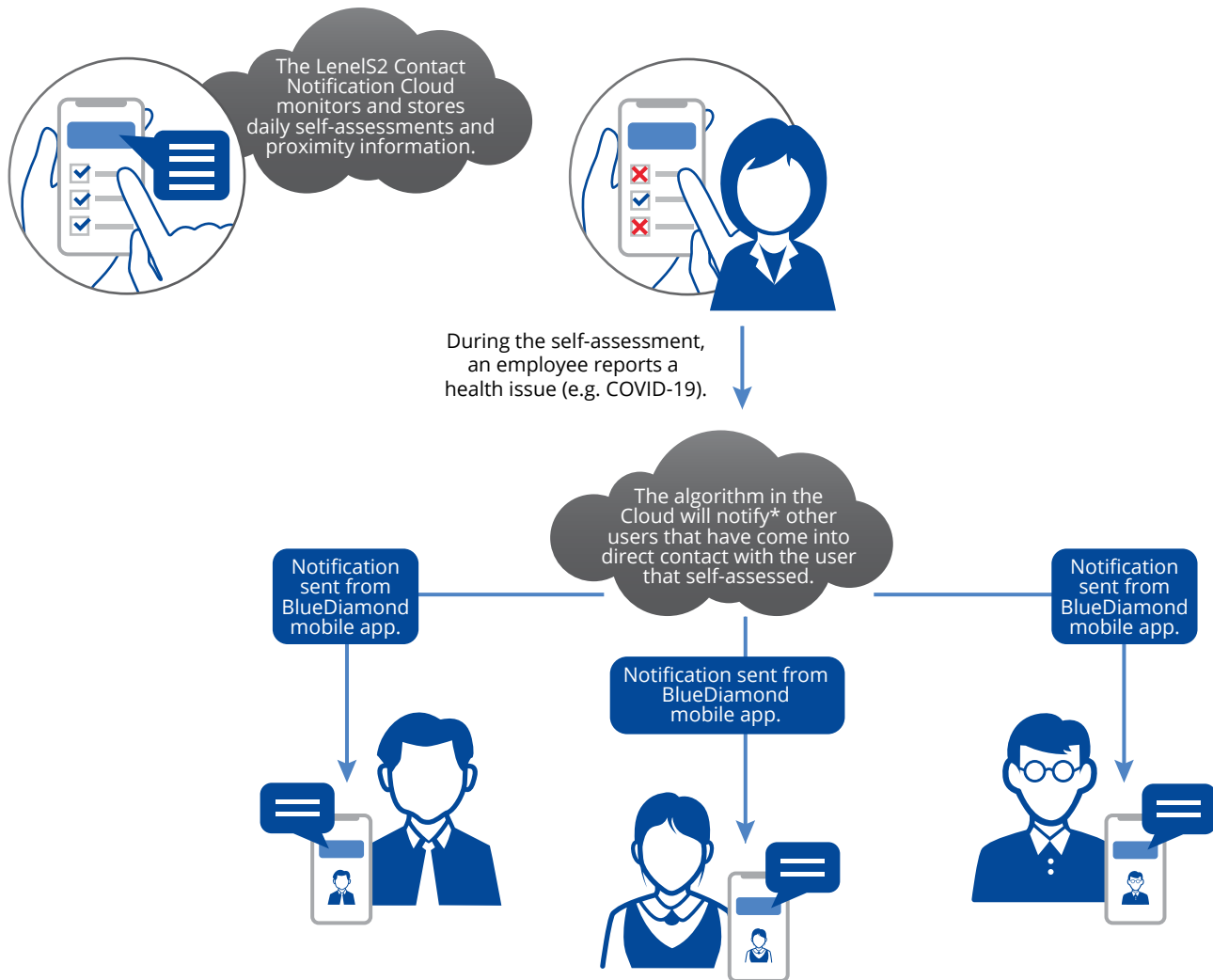


Social Distancing



A social distancing notification will be triggered if the proximity of employees violates the social distancing parameters established by the building administrator.

Contact Notification



*Notification will be provided for awareness that users have come in contact with someone that has self-reported.

Contact Notification is a subscription-based service and requires the purchase of an annual license. Currently available to customers in the United States and Canada only. Contact your local Value-Added Reseller (VAR) or your LenelS2 sales representative for more information.



[LenelS2.com](https://www.LenelS2.com)

(866) 788-5095

Specifications subject to change without notice.

©2021 Carrier. All Rights Reserved. All trademarks are the property of their respective owners. LenelS2 is a part of Carrier.
2021/03



HEALTHYBUILDINGS